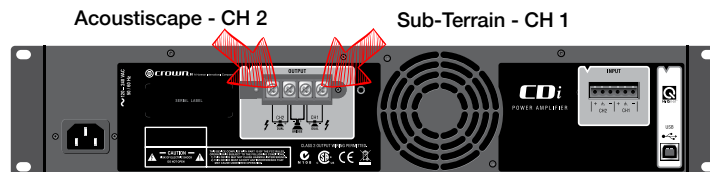


Included Equipment



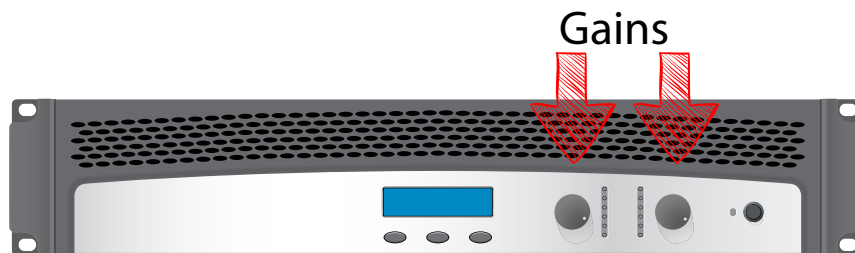
1. Wire the HS-SUB-12 to channel 1 on the amp.
2. Set all Acoustiscope speakers to 70V AS-1(15w), AS-2(25W)
3. Wire up Acoustiscope speakers in parallel to channel 2.



4. Wire the RCA's into the input section of the Crown amp as shown in illustration below.



5. Set left and right gains evenly at 95% - 2 clicks back from full.



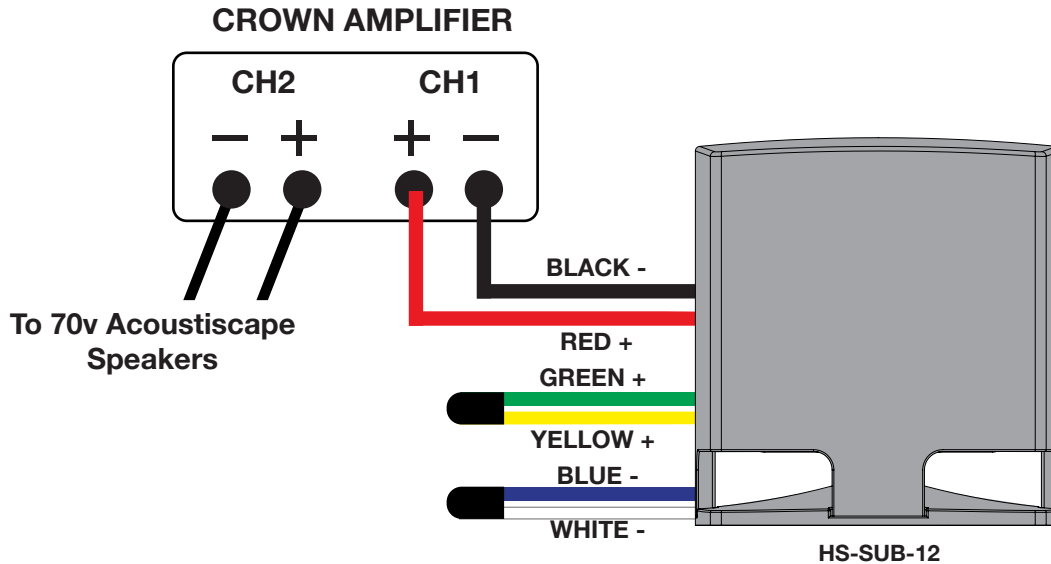
6. Crown amp comes shipped at AS/HS preset. To change the preset press SET/ENTER twice then use down/up button to select the right setting then press SET/ENTER button to load.



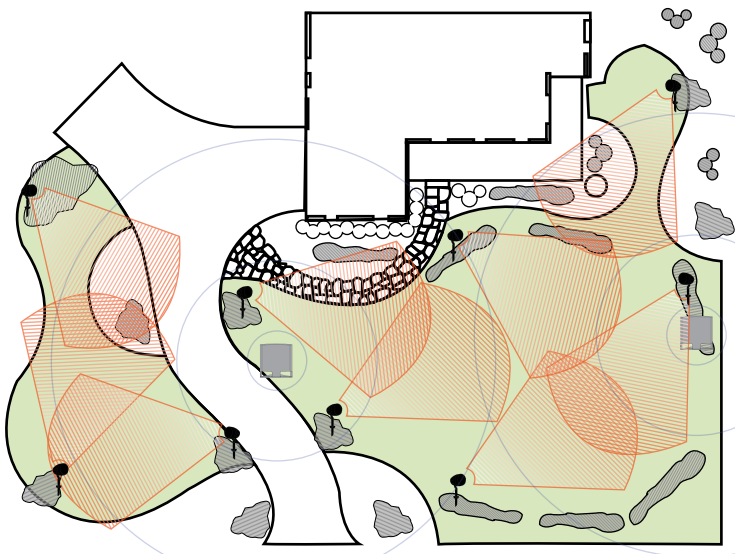
Wiring

70v Wiring from Crown Amplifier:

Connect the (red +) and the (black -) from the HS-SUB-12 to channel 1 on the Crown amplifier.



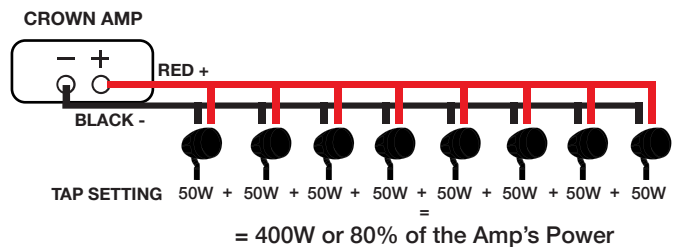
Backyard Satellite View



70V Installation Basics

Set taps to desired listening level. The tap settings can be changed as long as the total speaker wattage does NOT exceed 80% of the amp's power. The AS-2 tap setting dial can be found on the back of the speaker.

NOTE: Lower tap settings allow for more speakers but a lower maximum volume



Finding the Correct Tap Setting

Example:

AMP POWER x 80% = SAFE

500W x 80% = 400W

400W ÷ 50W (Tap setting) = 8 Speakers

OR

400W ÷ 30W (Tap setting) = 13 Speakers



Scan to view
install video